

All Over Clovers

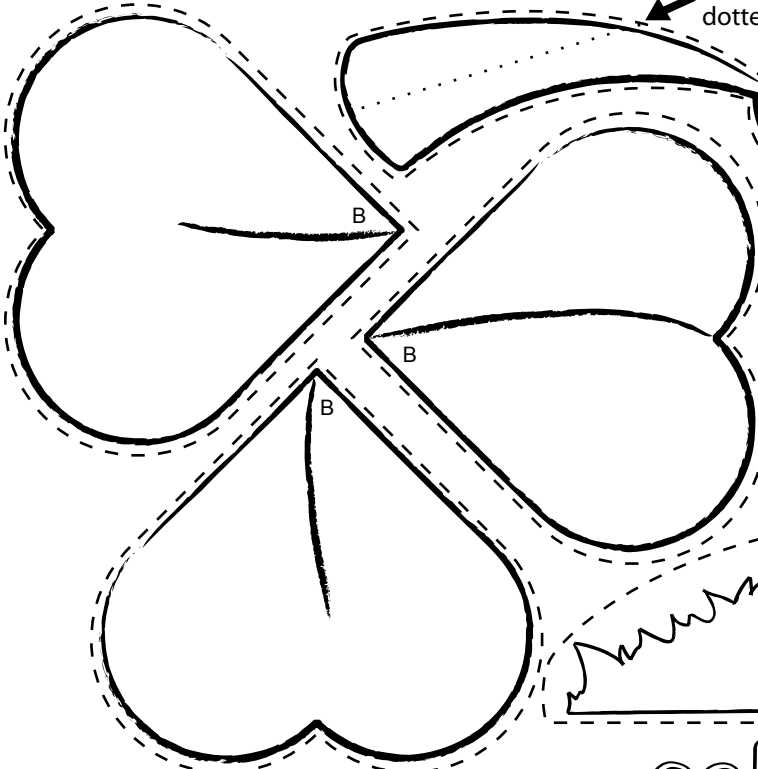
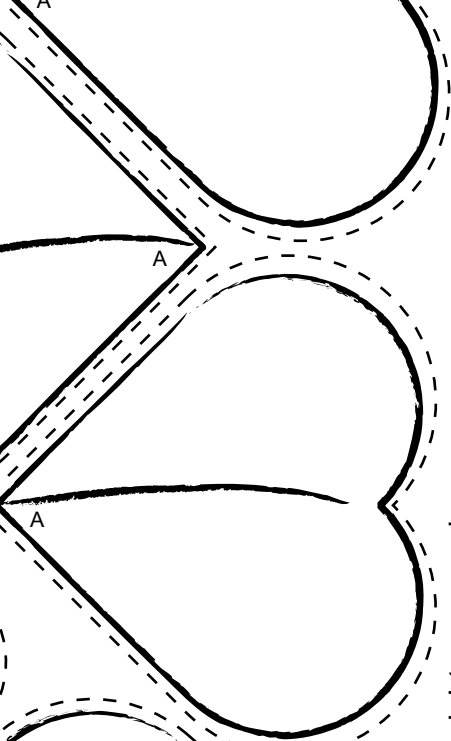
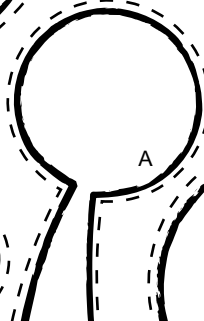
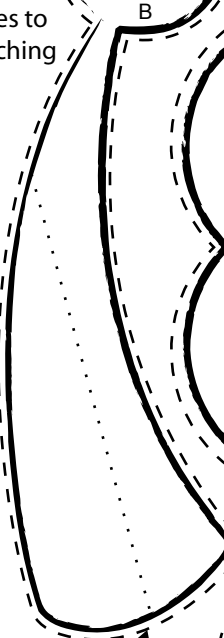
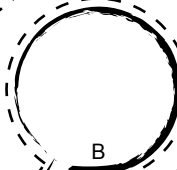
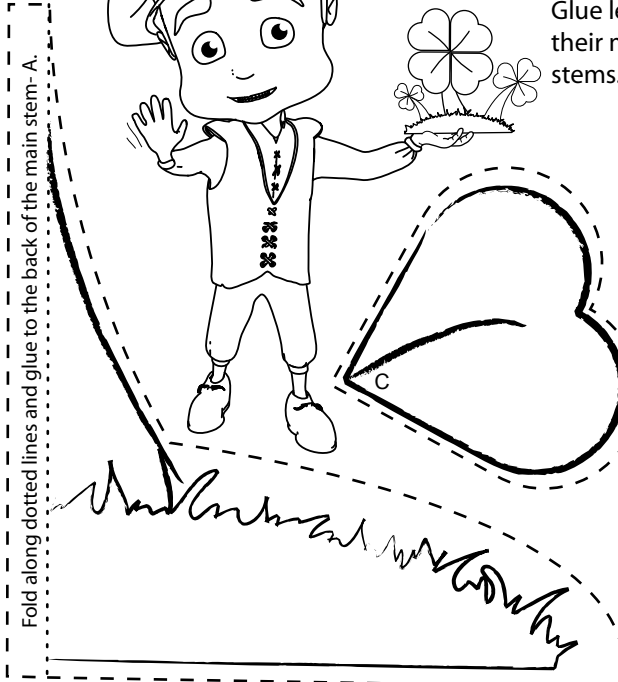
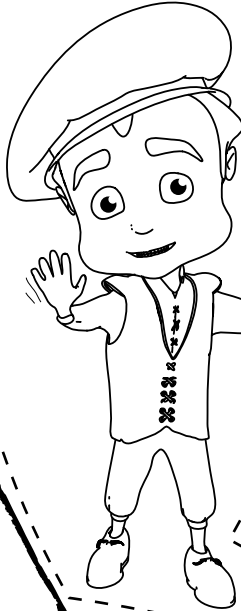
Make a three dimensional sculpture of clovers.

Color and glue entire activity sheet to a sheet of construction paper for added strength.

Glue completed clovers B & C to base of larger clover.

Glue leaves to their matching stems.

Fold along dotted lines and glue to the back of the main stem-A.



Fold along dotted lines.

Ask an adult to cut along the outer dashed lines of all the pieces.

